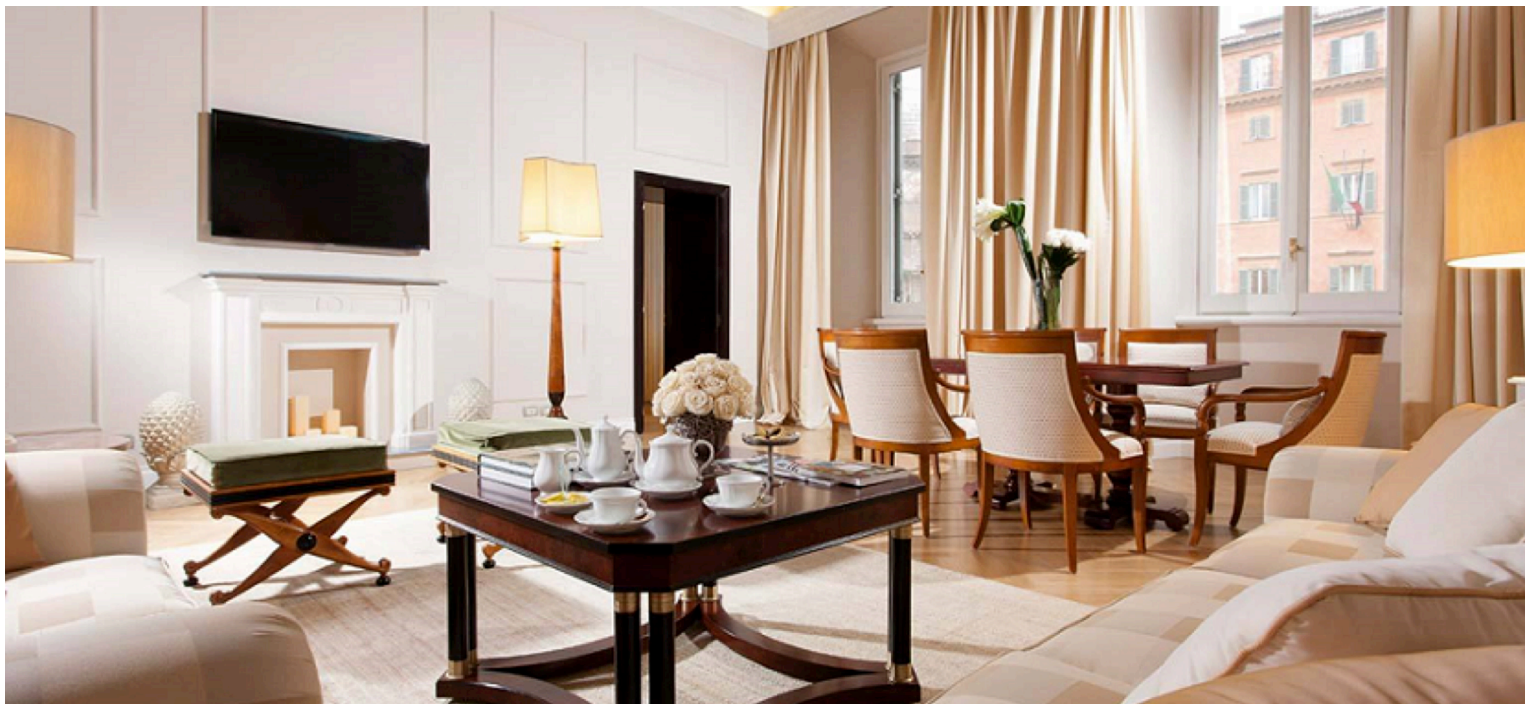




Grand Hotel De La Minerve 5*

4 nights

December 2017 – April 2018



Summary

Among the 5 star luxury hotel in Rome, Grand Hotel de la Minerve, is housed in a magnificent mansion dating from the 1600's. Set in the historical city centre, the hotel overlooks the Pantheon and is just minutes from Piazza Navona, the Trevi Fountain and the Spanish Steps. Completely renovated to better meet the needs of its modern, sophisticated clientele, the hotel has retained its noble, elegant lines and the atmosphere of a comfortable, welcoming aristocratic "home".

Prices Include

Round trip ticket to Rome (economy class)
Round trip transfer: airport - hotel - airport
4- night accommodation at hotel
Meal: daily breakfast
Assistance of our representative in Italy

Overview

Dates: December 2017 – April 2018
Interest: group - family- couple
Level of Comfort: 5/5
Minimum # of passengers: none
Maximum # of passengers: none

Prices Exclude

Airport taxes
Fuel surcharge
DIP surcharge \$5/ticket
Optional Tours
Visa fees
Travel insurance
All other expenses

Gemmayzeh - Verdun - Kaslik - Zahle - Corporate Desk - Jbeil - Tripoli **SOON**

Holiday Packages & Experiences | Tailor - Made Holidays | Cruises | Weddings Abroad & Honeymoons
Airline Tickets | Villa & Yacht Rental | Worldwide Hotel Reservations | Corporate Services | Incoming Tourism

www.wilddiscovery.com.lb - info@wilddiscovery.com.lb





Starting Price Per Person in US\$

Hotel	Room Type	Double
Grand Hotel De La Minerve 5*	Classic	1070
	Superior	1180
	Deluxe	1380

- Prices may change without prior notice and subject to availability at time of booking

Flight Schedule

From	To	Flight No	Departure	Arrival
Beirut	Rome	AZ 827	04:25	07:00
Rome	Beirut	AZ 826	21:45	02:00 + 1

Payment facilities available with CFC

This is a product sheet elaborated in order to give you a quick overview of our package with details pertaining to hotels, flights and proposed tours. This is not a tailor made quotation and should you wish to have specific details reviewed to better suits your need please do not hesitate to contact one of our travel consultants or visit one of our branches.

CODE: IT-WIN18-GRAND HOTEL DE LA MINERVE

Gemmayzeh - Verdun - Kaslik - Zahle - Corporate Desk - Jbeil - Tripoli **SOON**

Holiday Packages & Experiences | Tailor - Made Holidays | Cruises | Weddings Abroad & Honeymoons
Airline Tickets | Villa & Yacht Rental | Worldwide Hotel Reservations | Corporate Services | Incoming Tourism

www.wilddiscovery.com.lb - info@wilddiscovery.com.lb

