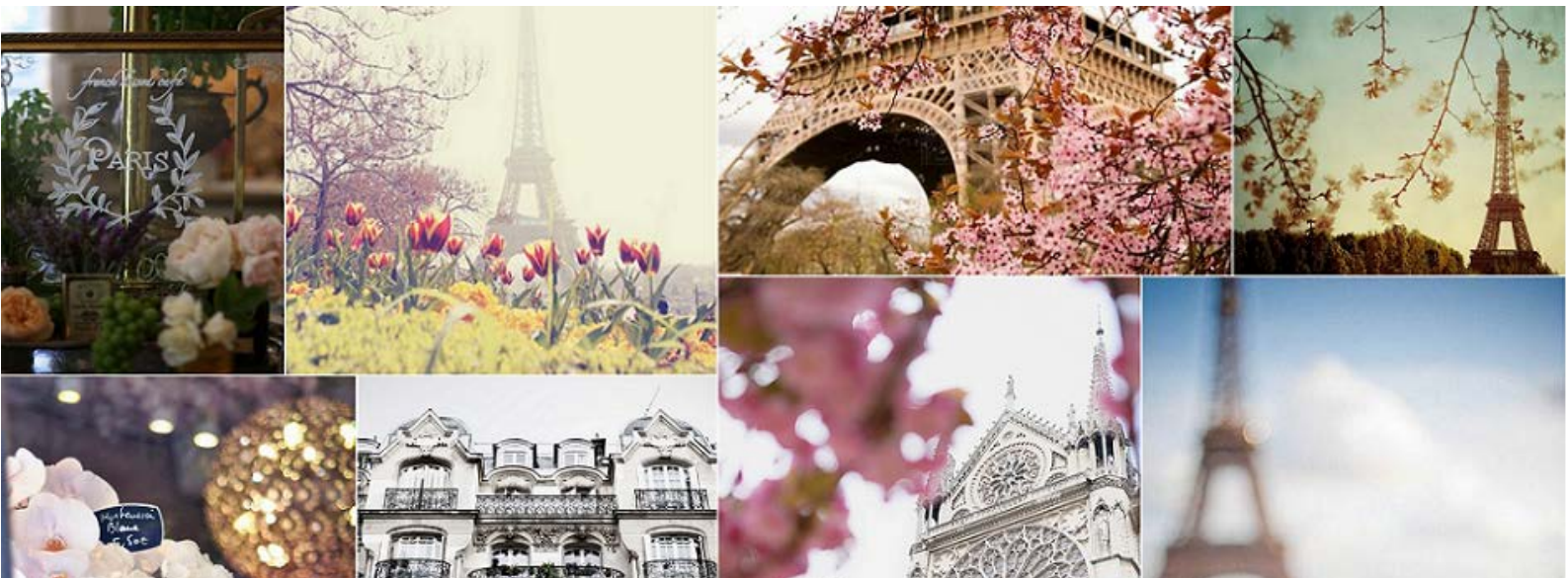




## Short Break in Paris

4 Nights

28 April 2016 – 02 May 2016



### Summary

One of the most splendid clichéd activities in Paris is without a doubt walking the Champs Elysees. Then you can stroll from the Arc De Triomphe to the Louvre Museum, discovering one of the most visited destinations in the world.

### Overview

**Dates:** 28 April 2016 – 02 May 2016

**Interest:** group - family - couple

**Level of Comfort:** 5

**Minimum # of passengers:** none

**Maximum # of passengers:** none

### Prices Include

Round trip ticket to Paris ( economy class)  
Round trip transfer: airport - hotel - airport  
4-night accommodation at hotel  
Meal: daily breakfast  
Assistance of our representative in France

### Prices Exclude

Airport taxes  
Fuel surcharge  
DIP surcharge \$5/ticket  
Optional Tours  
Visa fees  
Travel insurance  
All other expenses

Gemmayzeh - Verdun - Kaslik - Furn el Chebbak - Zalka - Zahle - ABC Achrafieh - Corporate Desk

Holiday Packages & Experiences | Tailor - Made Holidays | Cruises | Weddings Abroad & Honeymoons  
Airline Tickets | Villa & Yacht Rental | Worldwide Hotel Reservations | Corporate Services | Incoming Tourism

[www.wilddiscovery.com.lb](http://www.wilddiscovery.com.lb) - [info@wilddiscovery.com.lb](mailto:info@wilddiscovery.com.lb)





#### Starting price per person in US\$

Hotel	Room Type	Double	Single
Eden Opera Paris 3*	Standard	905	1275
Floride Etoile 3*	Club Room	1060	1540
Garden Elysee 4*	Classic Room	1165	1775
W Paris 5*	Cosy Room	1420	2185
Prince de Galles 5*	Art Deco	1885	3065

- Prices may change without prior notice and subject to availability at time of booking

#### Flight Schedule

From	To	Flight No	Departure	Arrival
Beirut	Athens	A3 937	04:30	06:30
Athens	Paris	A3 610	08:35	11:10
Paris	Athens	A3 613	16:40	20:50
Athens	Beirut	A3 936	23:55	01:50

#### Booking terms & conditions

##### Payment conditions:

- 50% down payment upon reservation. Balance upon delivery of the documents.
- 100% payment is required for all bookings done 15 days before departure

##### Cancellation Policy:

- US\$300 per person upon reservation and up to 30 days prior to departure
- 50% of the package price in the event of withdrawal 29 to 15 days prior to departure date
- 100% of the package price in the event of withdrawal 14 to 0 days prior to departure

##### Modification Policy:

- US\$ 35.00 for any modification done to the package

#### Payment facilities available with CFC

This is a product sheet elaborated in order to give you a quick overview of our package with details pertaining to hotels, flights and proposed tours. This is not a tailor made quotation and should you wish to have specific details reviewed to better suits your need please do not hesitate to contact one of our travel consultants or visit one of our branches.

CODE: FR-EASTER16- SHORT BREAK IN PARIS

Gemmayzeh - Verdun - Kaslik - Furn el Chebbak - Zalka - Zahle - ABC Achrafieh - Corporate Desk

Holiday Packages & Experiences | Tailor - Made Holidays | Cruises | Weddings Abroad & Honeymoons  
Airline Tickets | Villa & Yacht Rental | Worldwide Hotel Reservations | Corporate Services | Incoming Tourism

[www.wilddiscovery.com.lb](http://www.wilddiscovery.com.lb) - [info@wilddiscovery.com.lb](mailto:info@wilddiscovery.com.lb)

