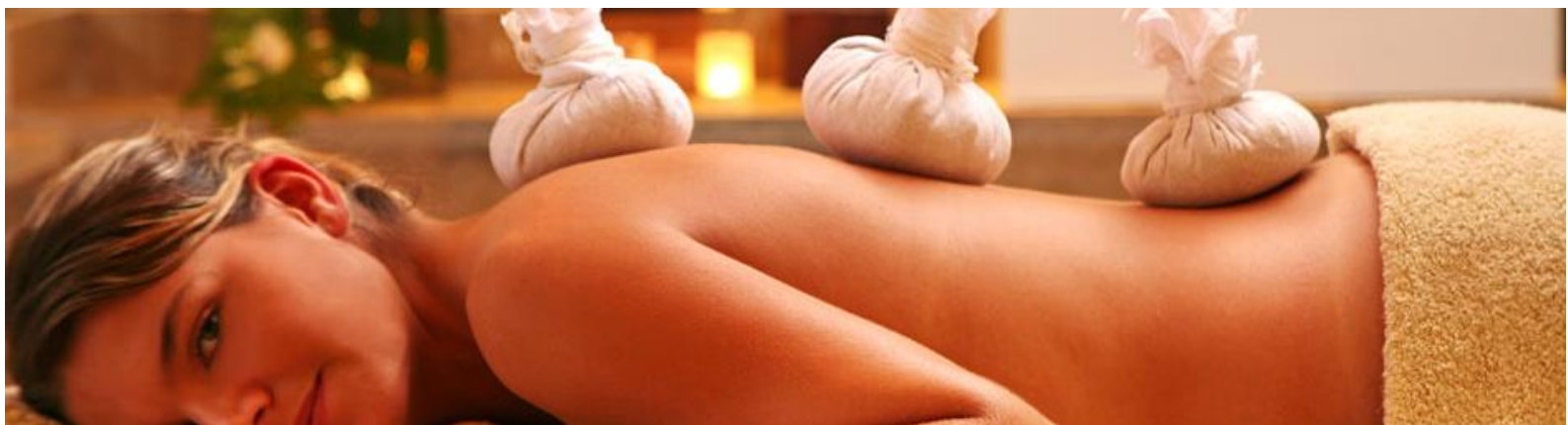




Ananda Spa 5*

5 Nights

01 January 2015 – 15 April 2015



Summary

Wild discovery has selected this spa for the exceptional rich selection of natural ingredients Incorporated into the uplifting and effective Ayurveda. The spa experience strives to achieve the ultimate harmony between the physical and the mental realms of the individual offering pampering and fitness as well as weight loss programs. It is tucked in the tranquil Himalayan foothills; a ride away from Haridwar, the center of Hindu mysticism

Overview

Dates: 01 January 2015 – 15 April 2015

Interest: couple- honeymoon - solo

Level of Comfort:5

Minimum # of passengers: none

Maximum # of passengers: none

Wild Discovery Advantages

- A proven expertise in organizing successful holidays
- Experienced and knowledgeable staff
- High quality service & strong commitment to customer satisfaction
- Permanent assistance from Wild Discovery Head Office at any moment
- Attention to details that make the difference

Treatments & Pluses

Treatments: Ayurveda - Peiki

massages -facials

body treatments - nail care

Exfoliation & Wraps

Yoga & meditation - hydrotherapy

Activities: cooking courses - billiard - golf -

safari - rafting - nature walks

Gemmayzeh - Verdun - Kaslik - Furn el Chebbak - Zalka - Zahle - ABC Dbayeh - ABC Achrafieh - Corporate Desk

Holiday Packages & Experiences | Tailor - Made Holidays | Cruises | Weddings Abroad & Honeymoons
Airline Tickets | Villa & Yacht Rental | Worldwide Hotel Reservations | Corporate Services | Incoming Tourism

www.wilddiscovery.com.lb - info@wilddiscovery.com.lb





Pricing per person in US\$

Spa Treatment - 6 Days Getaway Packages	Room Type	Double	Single
	Palace View / Garden View	3735	5230
	Valley View	4040	5655
	Premium Valley View Room	4255	6145
	Garden Suite	5015	7365
	Ananda Suite	5965	9075

Prices Include

Round trip ticket to Dehradun (economy class)
Round trip transfer: airport – hotel – airport
5-night accommodation at hotel
Meals: daily breakfast & dinner
Access to hydrotherapy facilities: steam, sauna, plunge pool, hydro foot bath
Daily scheduled activities: Yoga, meditation, Pranayama, Vedanta and fitness sessions
Scheduled trek to Kunjapuri temple on the mountaintop with fabulous views of snow covered Himalayan peaks
Government taxes
Assistance of our representative in India

Prices Exclude

Airport taxes
Fuel surcharge
DIP surcharge \$5/ticket
Visa fees
Travel insurance
All other expenses

Flight Schedule

From	To	Flight No	Departure	Arrival
Beirut	Doha	QR 421	18:10	22:30
Doha	Delhi	QR 564	01:30	07:25
Delhi	Dehra Dun	9W 824	11:10	11:55
Dehra Dun	Delhi	AI 9810	19:30	20:30
Delhi	Doha	QR 563	04:35	06:25
Doha	Beirut	QR 424	08:45	11:50

Payment facilities available with CFC and Byblos Bank

This is a product sheet elaborated in order to give you a quick overview of our package with details pertaining to hotels, flights and proposed tours. This is not a tailor made quotation and should you wish to have specific details reviewed to better suits your need please do not hesitate to contact one of our travel consultants or visit one of our branches.

CODE: IN-H-WIN15-ANANDA SPA

Gemmayzeh - Verdun - Kaslik - Furn el Chebbak - Zalka - Zahle - ABC Dbayeh - ABC Achrafieh - Corporate Desk

Holiday Packages & Experiences | Tailor - Made Holidays | Cruises | Weddings Abroad & Honeymoons
Airline Tickets | Villa & Yacht Rental | Worldwide Hotel Reservations | Corporate Services | Incoming Tourism

www.wilddiscovery.com.lb - info@wilddiscovery.com.lb

